

TH
SERIES

THREE-WAY BI-AMP TRAPEZOID HYBRID® FULLY HORN LOADED



Unite Your Audience
The Martin Audio Experience



TH SERIES

The TH Series consists of two, very high performance, all-horn, three-way systems. Each is configured in a single wide-bandwidth package with extended frequency response and very high output capability. Ideally suited to larger club applications and large scale installs, the TH Series also aesthetically complements the CDD, BlacklineX and SX subwoofer ranges.

Horn-loading the bass and midrange sections as well as the high-frequency section maximises the efficiency of all bands, resulting in exceptional impact and output from a single enclosure. Bi-amp operation, with an internal passive network for the mid/high crossover, ensures the most effective use of available amplifier power.

Sonically, TH Series systems deliver the Martin Audio signature sound of warmth, clarity and smooth response at high levels with ease.

THH is a horizontally formatted system while THV is a vertically formatted system.



FEATURES

- All-horn three-way system
- 'Phase-ball' loaded mid-driver
- Hybrid® LF section
- Fitted with handles and castors
- Horizontal format and vertical format options
- Five year limited warranty

APPLICATIONS

- Larger club applications
- Large scale installs



ENGINEERING DESIGN

The Hybrid® low frequency section of each TH Series enclosure comprises a horn-loaded 15" (380mm)/4" (100mm) voice coil driver that is reflex loaded to extend the LF output to below the natural horn cut-off point. The LF driver features a water resistant cone and triple roll surround for increased excursion.

The mid-horn has a unique 'phase-ball' loading device which maintains the horizontal constant directivity characteristics of the horn at the upper end of its range. It is driven by a 10" (250mm) midrange driver with an aluminium demodulating ring for improved high-mid clarity and reduced distortion when driven hard.

The 70° x 40° HF section features a neodymium 1" (25mm) exit compression driver with a Kapton diaphragm for high sensitivity and extended HF performance. An internal mid/high passive crossover enables a TH Series three-way system to be driven in a bi-amp configuration.

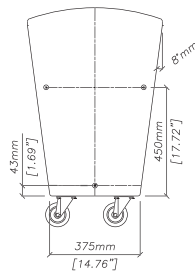
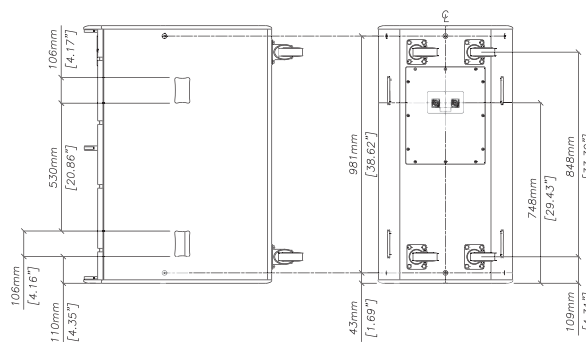
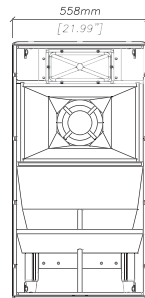
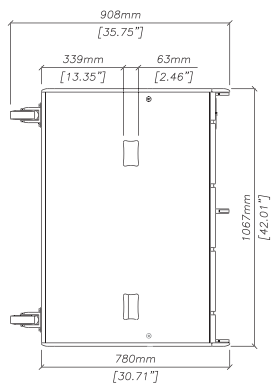
Each system features a trapezoidal birch ply cabinet and fitted M10 inserts to facilitate ease of mounting. Generous pocket handles and castors are fitted as standard.

A Martin Audio iK42 or VIA5002/5004 are the recommend amplifier partners, with the DX0.5 and DX4.0 controllers also compatible.

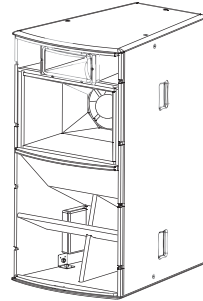




TECHNICAL SPECIFICATIONS



ALL DETAIL TYPICAL TO BOTH ENDS



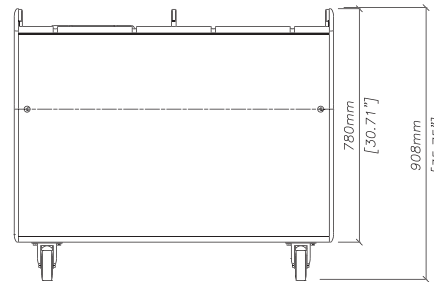
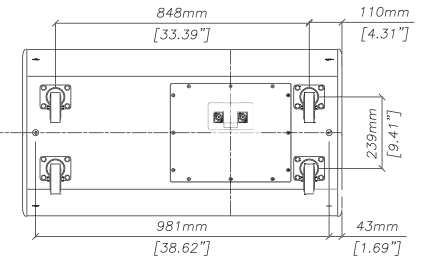
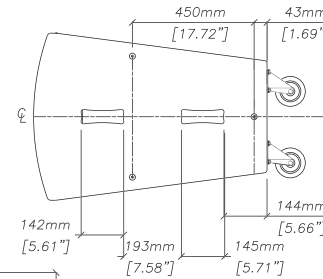
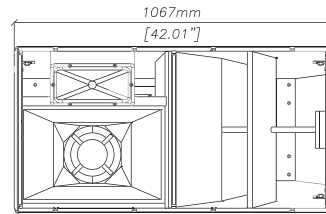
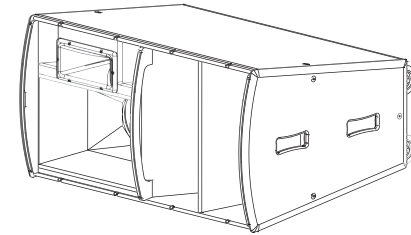
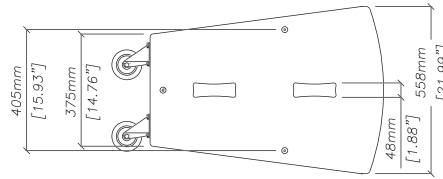
THV

THV

TYPE	Three-way bi-amp trapezoid Hybrid® fully horn loaded
FREQUENCY RESPONSE (5)	50Hz-18kHz ± 3dB
DRIVERS	15" (380mm)/4" (100mm) coil bass driver 10" (250mm)/2.5" (63.5mm) coil mid driver 1" (25mm) exit HF compression driver
RATED POWER (2)	LF: 750W AES, 3000W peak MF + HF: 300W AES, 1200W peak
RECOMMENDED AMPLIFIER	iK42 / VIA5002/5004
SENSITIVITY (6)	LF: 104dB, MF + HF: 104dB
MAXIMUM SPL (9)	133dB continuous, 139dB peak
NOMINAL IMPEDANCE	LF: 8 ohms, MF + HF: 8 ohms
DISPERSION (-6dB)	70° horizontal, 40° vertical
CROSSOVER	200Hz active, 2kHz passive
ENCLOSURE	250 litre, multi-laminate birch ply
FINISH	Textured black paint
PROTECTIVE GRILLE	Black perforated steel
CONNECTORS	2 x Neutrik NL4
PIN CONNECTIONS	LF+,- : 1+,1-, (MF + HF) +,- : 2+,2-
FITTINGS	12 x M10 inserts 4 x 4" (100mm) castors, 4 x pocket handles
DIMENSIONS (inc wheels)	(W) 558mm x (H) 1067mm x (D) 780mm (908mm) (W) 22ins x (H) 42ins x (D) 30.7ins (35.7ins)
WEIGHT	77.5kg (170.5lbs)

THH

TYPE	Three-way bi-amp trapezoid Hybrid® fully horn loaded
FREQUENCY RESPONSE (5)	50Hz-18kHz ± 3dB
DRIVERS	15" (380mm)/4" (100mm) coil bass driver 10" (250mm)/2.5" (63.5mm) coil mid driver 1" (25mm) exit HF compression driver
RATED POWER (2)	LF: 750W AES, 3000W peak MF + HF: 300W AES, 1200W peak
RECOMMENDED AMPLIFIER	iK42 / VIA5002/5004
SENSITIVITY (6)	LF: 104dB, MF + HF: 104dB
MAXIMUM SPL (9)	133dB continuous, 139dB peak
NOMINAL IMPEDANCE	LF: 8 ohms, MF + HF: 8 ohms
DISPERSION (-6dB)	70° horizontal, 40° vertical
CROSSOVER	200Hz active, 2kHz passive
ENCLOSURE	250 litre, multi-laminate birch ply
FINISH	Textured black paint
PROTECTIVE GRILLE	Black perforated steel
CONNECTORS	2 x Neutrik NL4
PIN CONNECTIONS	LF+,- : 1+,1- (MF + HF) +,- : 2+,2-
FITTINGS	12 x M10 inserts 4 x 4" (100mm) castors 4 x pocket handles
DIMENSIONS (inc wheels)	(W) 1067mm x (H) 558mm x (D) 780mm (908mm) (W) 42ins x (H) 22ins x (D) 30.7ins (35.7ins)
WEIGHT	77.5kg (170.5lbs)



THH

ALL DETAIL TYPICAL TO BOTH ENDS

Notes

- (1) Measured on-axis in half space at 2 metres, then referred to 1 metre.
- (2) AES Standard ANSI S4.26-1984.
- (3) Measured in half space at 2 metres with 1 watt input, using band limited pink noise, then referred to 1 metre.
- (4) Measured in half space at 2 metres using band limited pink noise, then referred to 1 metre.
- (5) Measured on-axis in open (4 π) space at 2 metres, then referred to 1 metre.
- (6) Measured in open (4 π) space at 2 metres with 1 watt input, using band limited pink noise, then referred to 1 metre.
- (7) Measured in open (4 π) space at 2 metres using band limited pink noise, then referred to 1 metre.
- (8) Measured in open (4 π) space at 2 metres with 2.83V input, using band limited pink noise, then referred to 1 metre.
- (9) Calculated at 1 metre.

TH SERIES

Martin Audio Limited

Century Point

Halifax Road

Cressex Business Park

High Wycombe

Buckinghamshire

HP12 3SL

England

FOR SALES ENQUIRIES:

UK

Telephone: +44 (0)1494 535312

E-mail: info@martin-audio.com

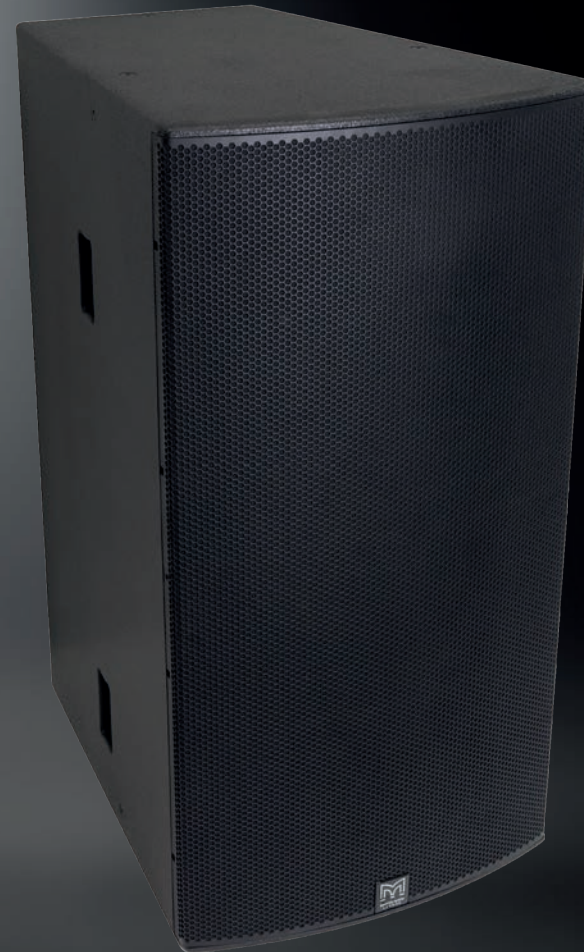
NORTH AMERICA

Telephone: 818 649 7776

www.martin-audio.com

All information is Copyright © 2018 Martin Audio Ltd.

Martin Audio, the Martin Audio logo and Hybrid are registered trademarks of Martin Audio Ltd. in the United Kingdom, United States and other countries; all other Martin Audio trademarks are the property of Martin Audio Ltd.



Unite Your Audience
The Martin Audio Experience

Version 1.1